

**Title:** Construction canteen at Archery ground at Tsimasham.

**Sub- Title:** Truss Detail

**Note:** All dimension in mm

**Scale:** NTS

**Drawn by:**

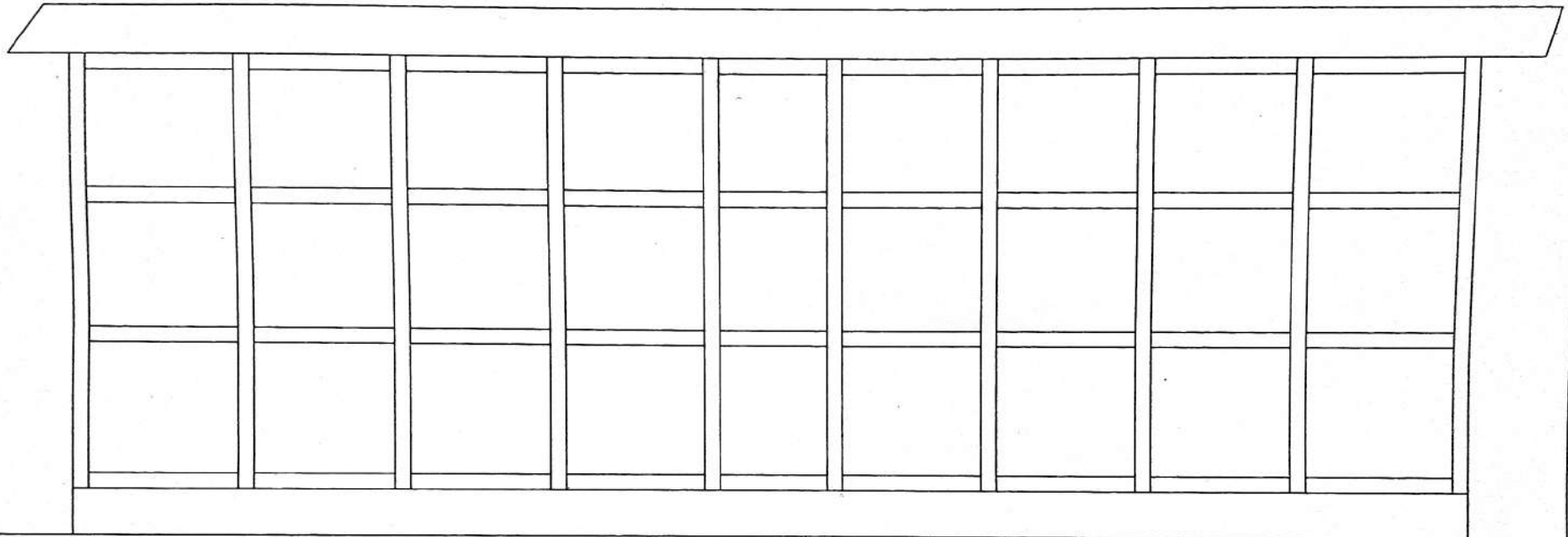
Site Engineer *[Signature]*

**Checked by:**

CDE *[Signature]*


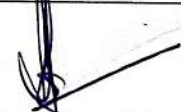
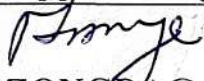
**Approved by:**

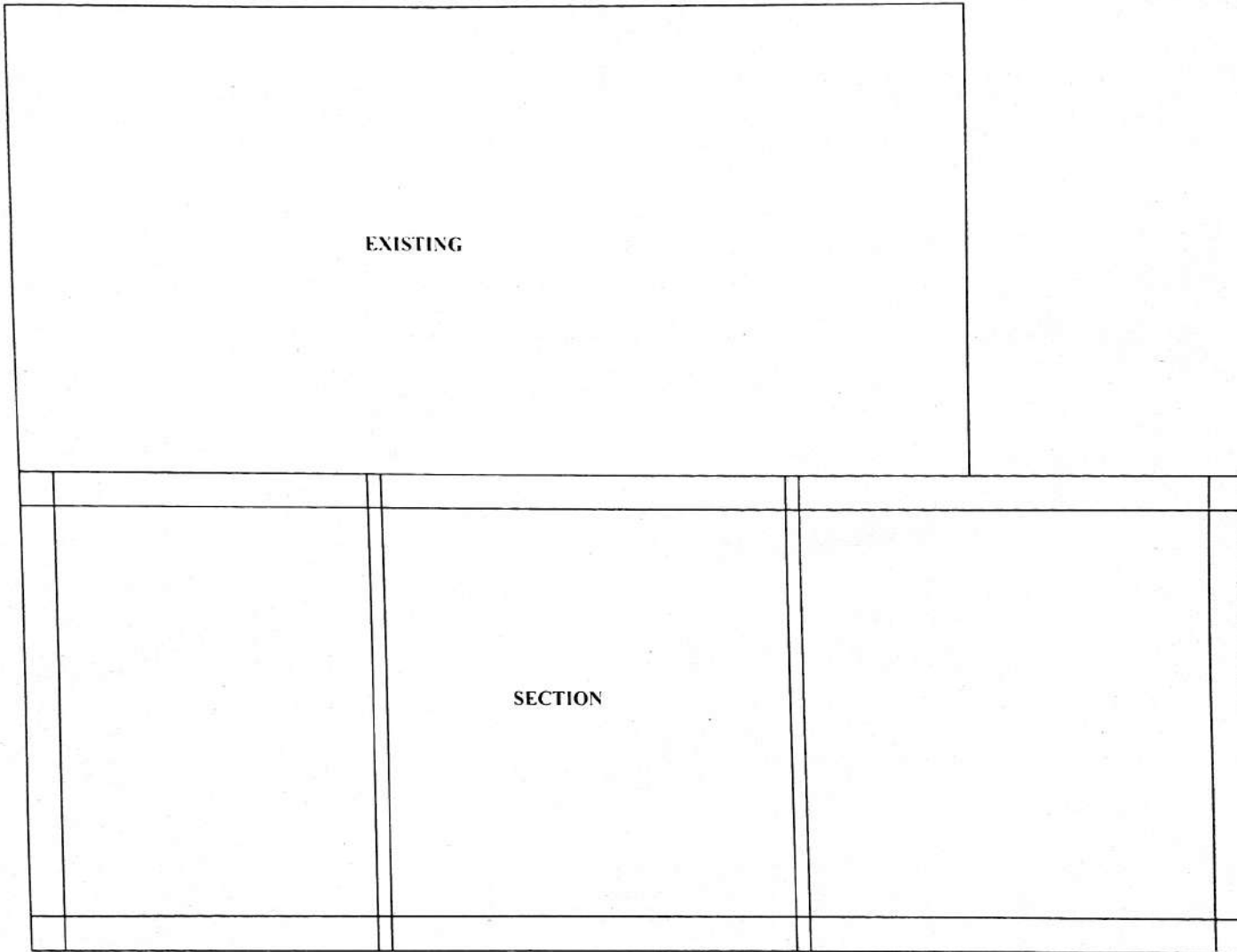
*[Signature]*  
DZONGBAG



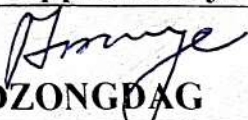


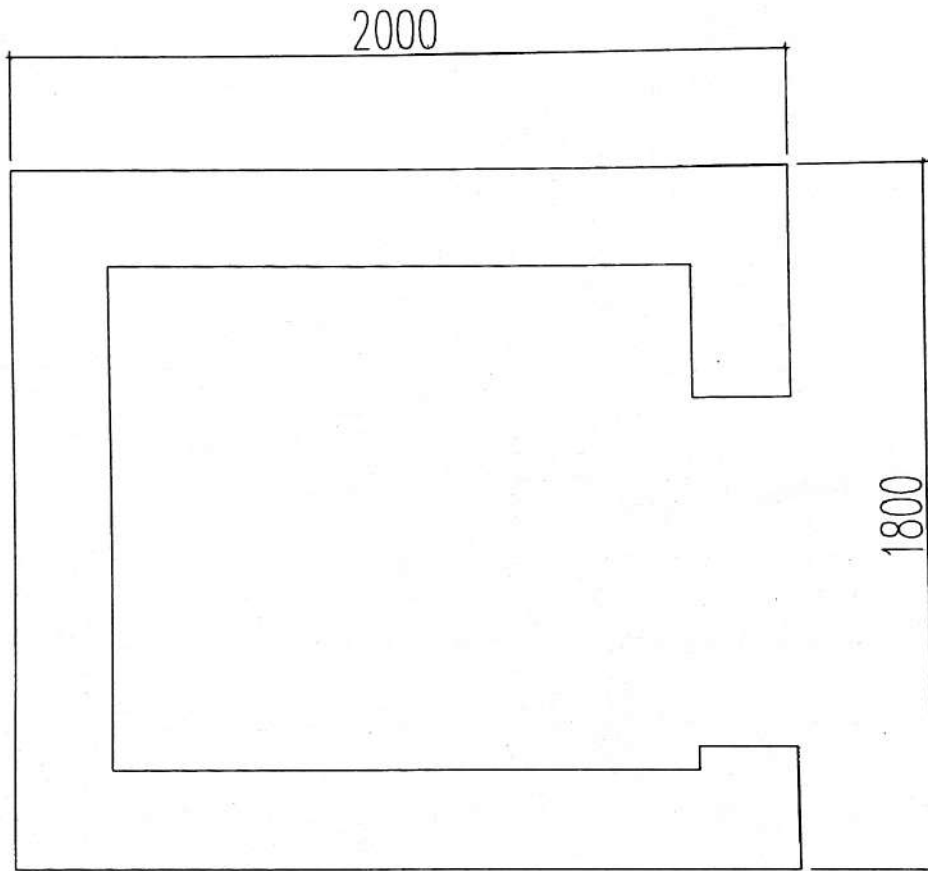
BACK ELEVATION



<b>Title:</b>	Construction canteen at Archery ground at Tsimasham.		
<b>Sub- Title:</b>	Truss Detail		
<b>Note:</b> All dimension in mm	<b>Drawn by:</b>	<b>Checked by:</b>	<b>Approved by:</b>
<b>Scale:</b> NTS	 Site Engineer	CDE 	 DZONGBAG



<b>Title:</b>	Construction canteen at Archery ground at Tsimasham.		
<b>Sub- Title:</b>	Truss Detail		
Note: All dimension in mm	<b>Drawn by:</b>	<b>Checked by:</b>	<b>Approved by:</b>
	Site Engineer 	CDE 	 DZONGDAG
Scale: NTS			



**PLAN**



**Title:**

Construction canteen at Archery ground at Tsimasham.

**Sub- Title:**

Truss Detail

Note: All dimension in mm

Scale: NTS

Drawn by:

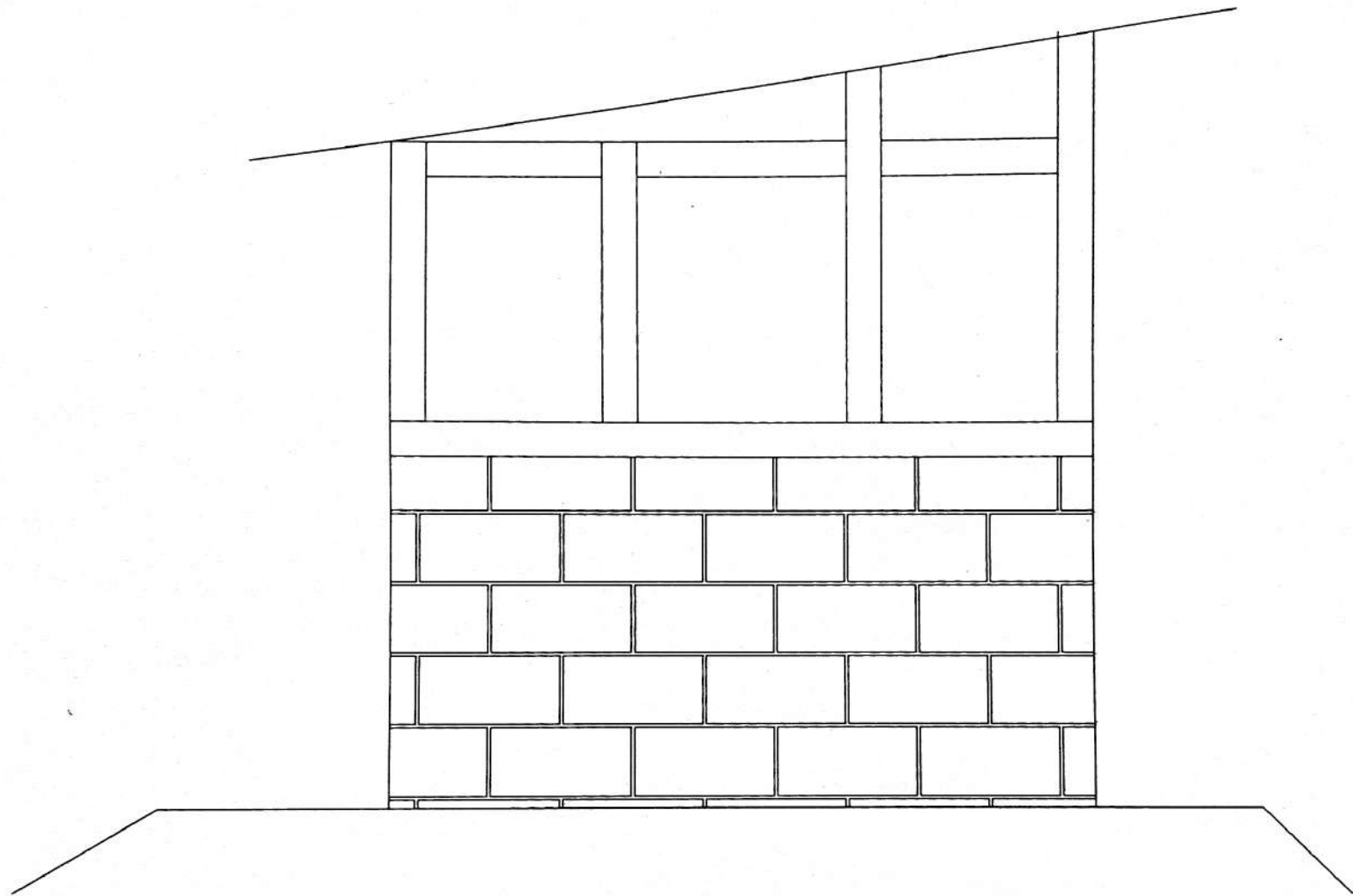
Site Engineer

Checked by:

CDE

Approved by:

DZONGDAG



## LEFT ELEVATION



**Title:**

Construction canteen at Archery ground at Tsimasham.

**Sub- Title:**

Truss Detail

Note: All dimension in mm

Scale: NTS

Drawn by:

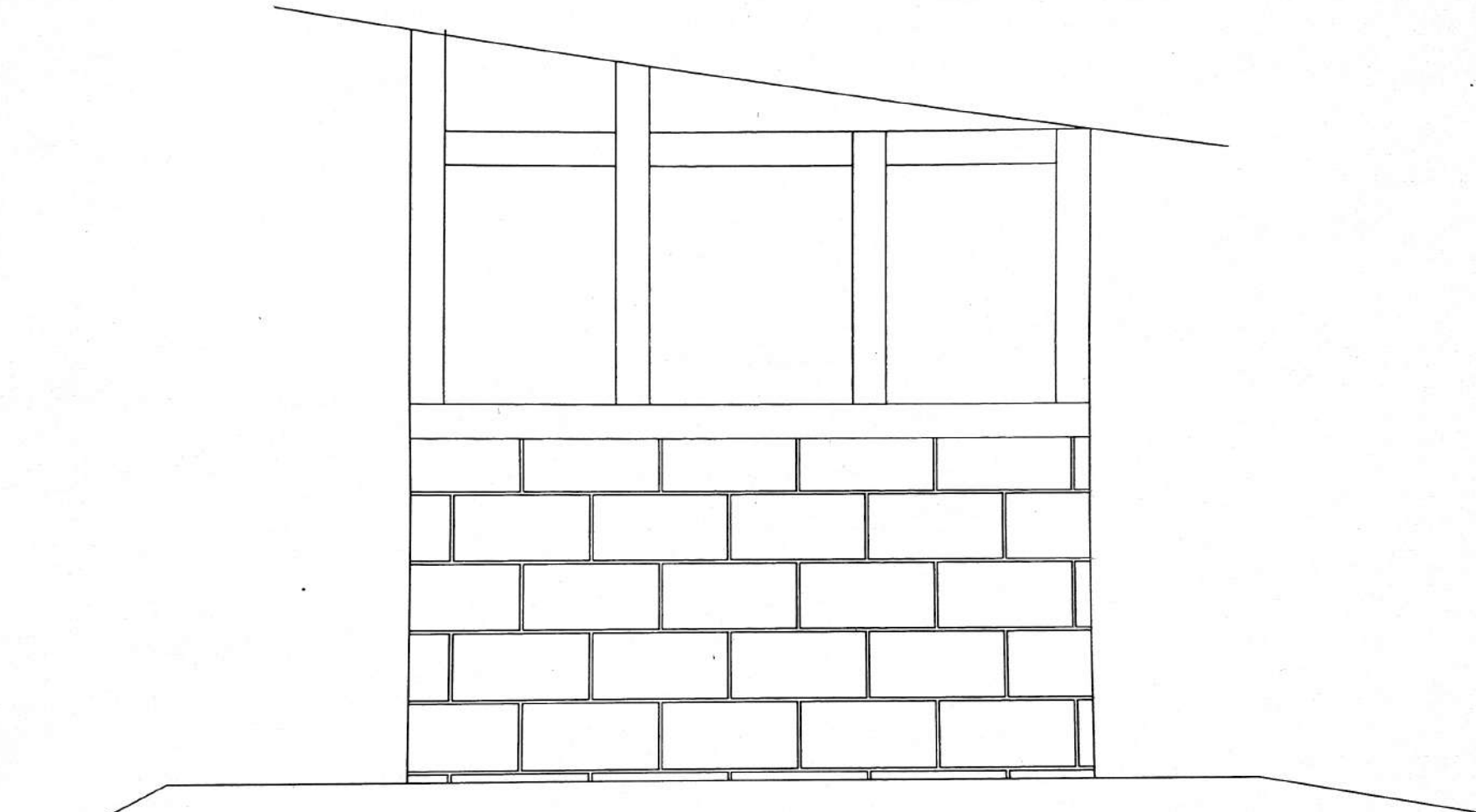
Site Engineer

Checked by:

CDE

Approved by:

DZONGDAG



## RIGHT ELEVATION



**Title:**

Construction canteen at Archery ground at Tsimasham.

**Sub- Title:**

Truss Detail

**Drawn by:**

**Checked by:**

**Approved by:**

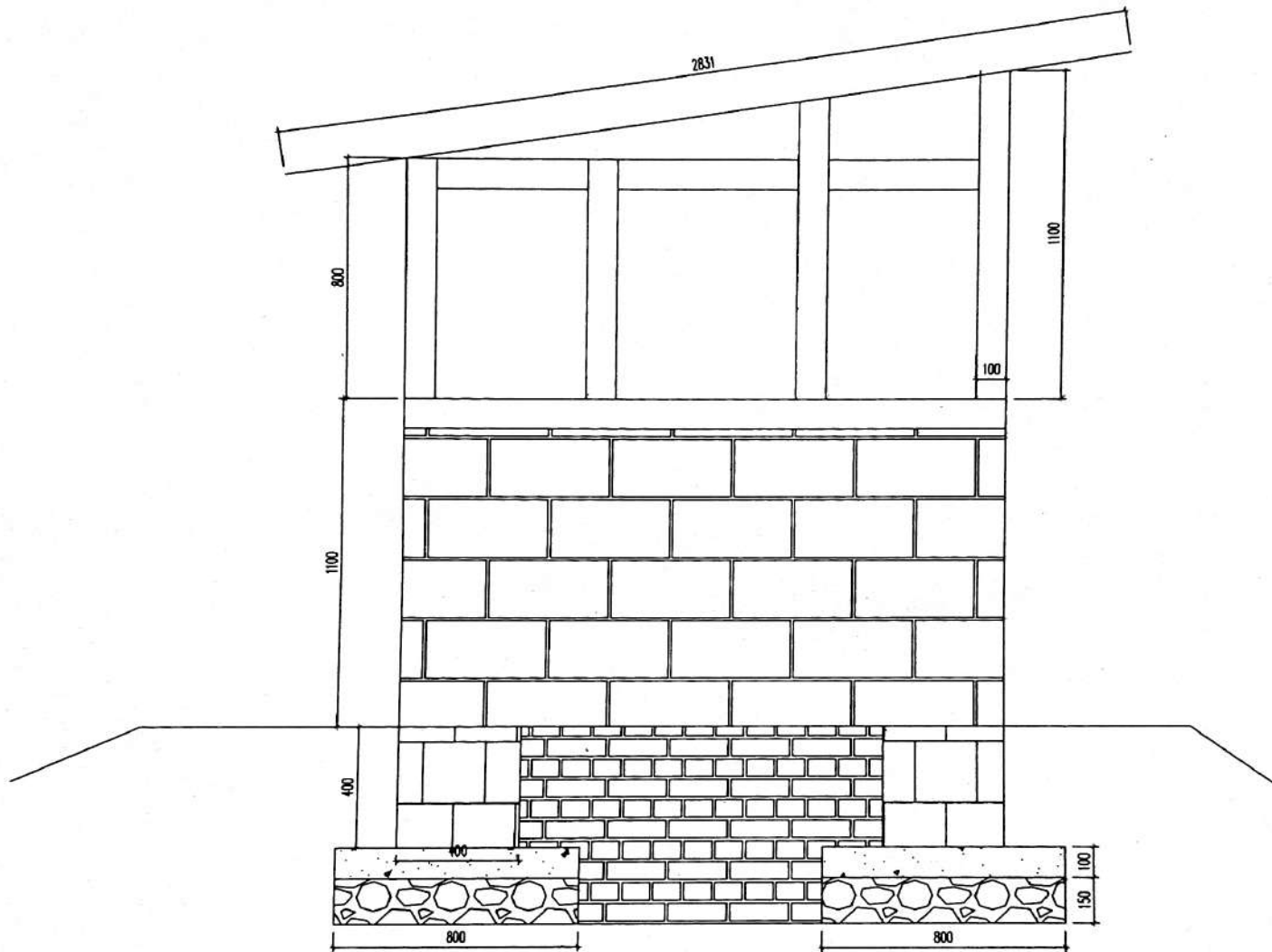
Note: All dimension in mm

Scale: NTS

Site Engineer 

CDE 

  
DZONGDAG



**SECTION**



**Title:** Construction canteen at Archery ground at Tsimasham.

**Sub- Title:** Truss Detail

**Note:** All dimension in mm

**Scale:** NTS

**Drawn by:**

Site Engineer

**Checked by:**

CDE

**Approved by:**

DZONGDAG

Name of work: Construction of canteen cum toilet at archery field.

Sub Title: Detail estimation.

SI No.	Description	No.	L(m)	B(m)	H(m)	Qty.	Unit	Rate	Amount.	C.I 26.34%
1	Excavation in foundation trenches or drains not exceeding 1.5m in width or area 10 sq.m on plan, including dressing & ramming, disposal of surplus soil within 50m lead & 1.5m lift									
		2	9	0.4	0.6	4.32				
		2	2.7	0.4	0.6	1.30				
						5.62	Cu.m	172.83	970.61	
2	Providing and laying Hand packed stone filling or soling with stones Below footings									
		2	9	0.4	0.15	1.08				
		2	2.7	0.4	0.15	0.32				
	Flooring	1	8.1	2.7	0.15	3.28				
						4.68	Cu.m	1477.67	6922.15	
3	Providing and laying in position plain cement concrete excluding the cost of centering and shuttering - All work upto plinth level.1:4:8 (1 cement : 4 sand : 8 graded crushed stone 40 mm nominal size)									
	Below footings	2	9	0.4	0.1	0.72				
		2	2.7	0.4	0.1	0.22				
	Flooring	1	8.1	2.7	0.1	2.19				
						3.12	Cu.m	3608.47	11269.25	2968.32
4	Providing & laying Random Rubble Masonry with hard stone in foundation & plinth. In cement mortar 1:6									
		2	9	0.4	0.6	4.32				
		4	2.7	0.4	0.6	2.59				
						6.91	Cu.m	3958.78	27363.09	7207.44
5	Providing & laying concrete block brick in Foundation & Plinth. In cement mortar 1:6									
		2	9	0.25	1	4.5				
		4	3	0.25	1	3				
						7.5	Cu.m	6210.99	46582.43	12269.81
6	Providing & fixing in position dressed wood work in frames of doors, windows, clerestory windows and other frames, wrought and framed. Class 'B' (broad leaf)									
		4	9	0.1	0.1	0.36				
		8	3.3	0.1	0.1	0.26				
		10	1.3	0.1	0.1	0.13				

A



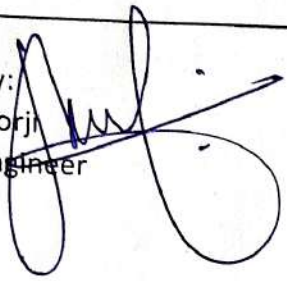
		16	1.4	0.1	0.1	0.22				
		4	1.5	0.1	0.1	0.06				
						1.04	Cu.m	24658.75	25595.78	
7	Providing & fixing roof framing, in trusses, purlins, rafters, posts, post plates including hoisting, etc. (excluding steel items) Class 'B' (broad leaf)									
		12	4	0.1	0.1	0.48				
		5	10	0.1	0.08	0.4				
						0.88	Cu.m	27191.61	23928.62	
8	Providing & fixing Pre Painted Steel Corrugated Roofing sheets, including bolts, hooks and nuts 8mm dia. with bitumen and G.I limpet washers filled with white lead for connection, excluding the cost of purlins, rafter and trusses. 25g (0.50mm)									
		1	10	4		40	Sq.m	1016.74	40669.6	10712.37
9	Providing & laying 12mm cement plaster. C.M 1:5									
		2	9	1		18				
		2	3.5	1		7				
		6	3	1		18				
						43	Sq.m	182.93	7865.99	2071.90
10	Providing & fixing 75mm thick split bamboo wall including grooving frames, 20mm plaster cement mortar 1:6 both sides (excluding cost of									
		8	1	1		8				
		16	0.9	1		14.4				
						22.4	Sq.m	795.57	17820.77	4693.99
	<b>Toilet:</b>									
11	Excavation in foundation trenches or drains not exceeding 1.5m in width or area 10 sq.m on plan, including dressing & ramming, disposal of surplus soil within 50m lead & 1.5m lift									
		2	1.5	0.4	0.3	0.36				
		2	0.7	0.4	0.3	0.17				
						0.53	Cu.m	172.83	91.25	
12	Providing and laying Hand packed stone filling or soling with stones									
	Below footings	2	1.5	0.4	0.15	0.18				
		2	0.7	0.4	0.15	0.08				
	Flooring	1	0.7	0.7	0.15	0.07				
						0.34	Cu.m	1477.67	498.71	

13	Providing and laying in position plain cement concrete excluding the cost of centering and shuttering - All work upto plinth level.1:4:8 (1 cement : 4 sand : 8 graded crushed stone 40 mm nominal size)								
	Below footings	2	1.5	0.4	0.1	0.12			
		2	0.7	0.4	0.1	0.06			
	Flooring	1	0.7	0.7	0.1	0.05			
						0.23	Cu.m	3608.47	811.91 213.86
4	Providing & laying Random Rubble Masonry with hard stone in foundation & plinth. In cement mortar 1:6								
		2	1.5	0.4	0.6	0.72			
		2	0.7	0.4	0.6	0.34			
						1.06	Cu.m	3958.78	4180.47 1101.14
5	Providing & laying concrete block brick in Foundation & Plinth. In cement mortar 1:6								
		2	1.5	0.25	1	0.75			
		2	1	0.25	1	0.5			
						1.25	Cu.m	6210.99	7763.74 2044.97
6	Providing & fixing in position dressed wood work in frames of doors, windows, clerestory windows and other frames, wrought and framed. Class 'B' (broad leaf)								
		3	1	0.1	0.1	0.03			
		2	2.8	0.1	0.1	0.06			
		2	1.2	0.1	0.1	0.02			
		2	1.3	0.1	0.1	0.03			
		6	1	0.1	0.1	0.06			
						0.20	Cu.m	24658.75	4833.12
7	Providing & fixing roof framing, in trusses, purlins, rafters, posts, post plates including hoisting, etc. (excluding steel items) Class 'B' (broad leaf)								
		3	3	0.1	0.1	0.09			
		4	3	0.1	0.08	0.096			
						0.186	Cu.m	27191.61	5057.64

8	Providing & fixing Pre Painted Steel Corrugated Roofing sheets, including bolts, hooks and nuts 8mm dia. with bitumen and G.I limpet washers filled with white lead for connection, excluding the cost of purlins, rafter and trusses.25g (0.50mm)								
		1	3	3		9 Sq.m	1016.74	9150.66	2410.28
9	Providing & laying 12mm cement plaster.C.M 1:5								
		2	1.5	1		3			
		2	3.5	1		7			
		6	3	1		18			
						28 Sq.m	182.93	5122.04	1349.15
10	Providing & fixing 75mm thick split bamboo wall including grooving frames, 20mm plaster cement mortar 1:6 both sides (excluding cost of frame)								
		8	1	1		8			
		16	0.9	1		14.4			
						22.4 Sq.m	795.57	17820.77	4693.99
11	Constructing Septic Tanks, in R.R Masonry in cement mortar 1:6, including fittings, C.I cover with frame, 40mm thick concrete flooring (40mm aggregates) cement plaster concrete base in C.C 1:4:8 etc. complete as per standard design								
		1				1 each	36375.41	36375.41	9581.28
12	Providing & fixing P.V.C soil waste and vent pipes, single or double socketed, including pipe clip complete (excluding the cost of PVC fittings)110mm dia								
		1	6			6 m	313.7	1882.2	495.77
13	Providing & fixing P.V.C plain bend.110mm dia								
		1				1 each	116.31	116.31	30.64
14	Providing & laying G.I. pipes including G.I. fittings (excluding trenching, refilling & thrust block)25mm								
		1	20			20 m	255.89	5117.8	1348.03
15	Providing & laying H.D.P.E pipes, 10 PN, including H.D.P.E fittings (excluding trenching, refilling & thrust block)32mm								
		1	60			60 m	88.86	5331.6	1404.34

16	Providing & fixing brass bibcock.15mm, brass	1				1 each	367.12	367.12	96.70
								313509.03	64693.98
								64693.98	
							Total=	378203.01	

Prepared by:  
Ngawang Dorji  
Assistant Engineer



Checked by:

Lek Jay  
Chief Dzongkhag Engineer

