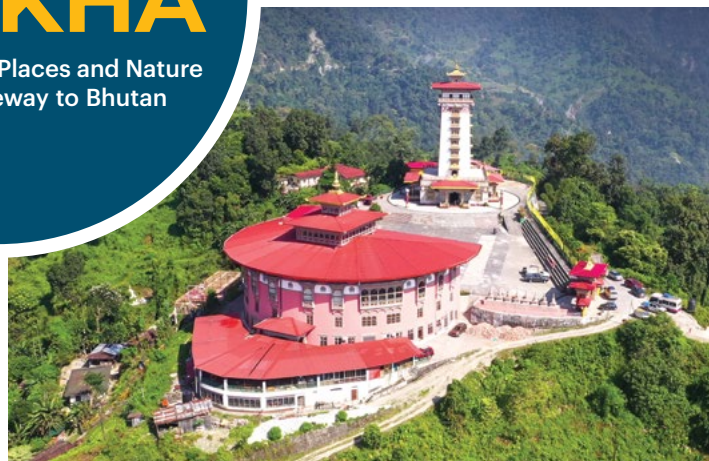




Explore CHUKHA

Discover People, Places and Nature
along the Gateway to Bhutan



About

THE BOOKLET

There are many places left unexplored and under-developed in Chhukha & Phuntsholing. This booklet provides a glimpse into the beauties of nature and people of this less travelled land called Chhukha. It also contains ready-made itineraries for any travel organizer to adapt.

To truly unlock the hidden treasures of Chukha, we shift our attention towards the tourism sector. By doing so, we showcase the rich cultural heritage, breathtaking landscapes, and unique experiences that these regions have to offer. This booklet serves the diverse attractions and opportunities available, enabling operators to curate unforgettable experiences for tourists. By harnessing the power of tourism, we not only boost the local economy but also foster sustainable development and preserve the natural and cultural heritage of these regions.

With Best Regards
Chhukha District Administration
Regional Office of Bhutan Chamber of
Commerce and Industry, Phuntsholing
Hotel and Restaurant Association of
Bhutan, Phuntsholing



Phuntsholing

ITINERARY

Phuntsholing is a bustling border town in Bhutan, serving as the entry point for travelers arriving from India. While it may not be as well-known as some of Bhutan's other destinations,

Phuntsholing offers a unique blend of cultures, vibrant markets, and a gateway to the enchanting Kingdom of Bhutan.



As the Bhutan Gate stands tall, it symbolizes not just a border but a bridge of cultural threads weaving India and Bhutan into a rich tapestry in Phuntsholing.

Pachu COMMUNITY TOURISM

A newly explored Camping and Riverside destination. It is operated by Community of Pachu village, Phuntsholing. It is located only about 6 kms from Phuntsholing town. At Pachu Community Tourism, you can experience the campsites and a diverse Southern Bhutanese culture infused with the Northerners. Here you can taste the delicious local food and local drink called 'Tongba'.

FOR BOOKINGS CONTACT
+975 17333201



Milarepa Tower (MILA GUTHOG)

The temple or the tower is built to honour the great saint Milarepa and his great deeds and to propagate his teachings for the people of the entire world.



Riwa Duntik NYE

When you drive 10 minutes away from the heart of the town, on the banks of Amochu river, there lies a giant and most sacred Ney called Duntik Ney.

The Ney unfolds the story of the King Gawa having 2000 queens and the Prince Dhendup, who resided near Phuentsholing. The Prince was said to be very kindhearted that he donated all his Father's belongings to the common people, eventually emptied the wealth of the Royal casket. This agitated the King to send his Son and family into exile for twelve years at Riwa Duntin.

There, the Prince and his family survived on the wild foods collected by his wife from the nearby vegetation.



Rinchending Lhakhang (KHARBANDI GOENPA)

At an altitude of 400 meters on the hillock of the Phuentsholing town, you can sight a scenic Karbandi Lhakhang. The Lhakhang was set up amongst the garden of tropical plants and flowers by Royal Grandmother, Ashi Phuntsho Chodron in 1967. One can halt at the Lhakhang to see the life-size statues of Zhabdrung, Guru Rinpoche along with the paintings portraying scenes from the life of Lord Buddha. From this vantage point in the Lhakhang vicinity, you can enjoy the panorama of Phuentsholing town and the plains of West Bengal.



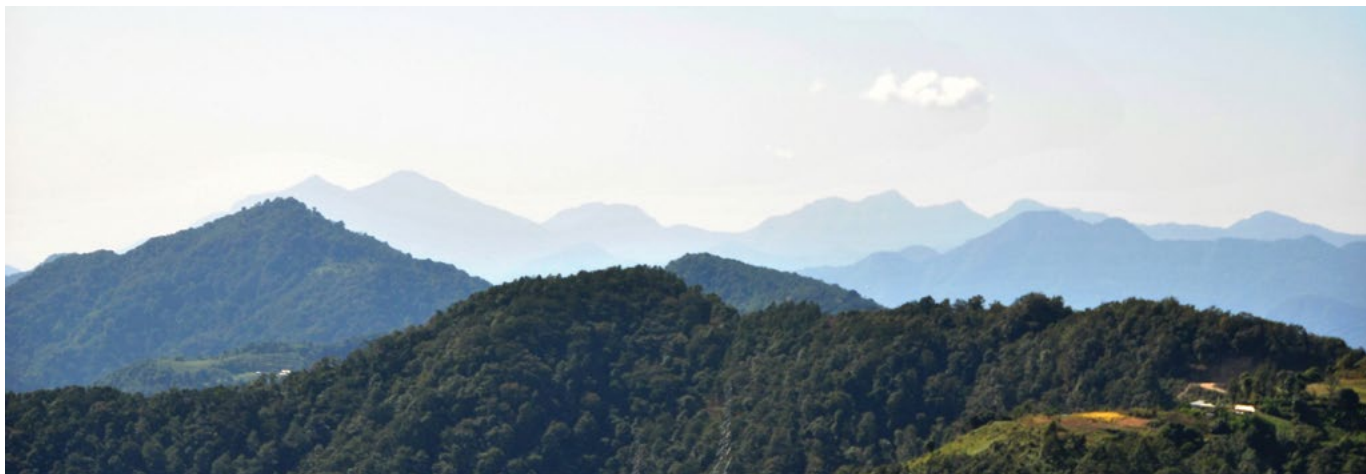
Toorsa TOWNSHIP VIEWPOINT

A spectacular view of the upcoming new township of Toorsa and development of Phuntsholing can be observed from Pachu Tar Viewpoint.

It is only about 15 minutes drive from Phuntsholing Town to reach the viewpoint

Gedu Itinerary

Nestled in the serene landscapes of Bhutan, Gedu stands as a hidden gem, inviting travelers to explore its natural beauty and cultural richness. This picturesque town offers a unique blend of outdoor adventures and spiritual experiences, making it a compelling destination for visitors seeking a peaceful escape.



Phaktshoding CYCLING & HIKING TRAIL

Phaktshoding Cycling Trail offers a unique experience for the cycling enthusiasts. The 4.5 kilometers trail meanders through the cool broad-leaved forest leading to the Phaktshoding Lake.

Even as you cycle through the pristine forests, you can hear the Rufous-necked hornbill swoop above your head.





Shawgayla Lake (ANTLER'S PASS)

Shawgayla Tsho (Antler's Pass Lake) is located to the east of Gedu at a distance of 33 kms. One of the beautiful stories ascribed to this lake is about a young cowherder girl and her coral necklace.

8 Stupas (CHORTENS)

The eight stupas (chortens) built by the voluntary labour of the ex-military personnel is a gift from His Majesty the Fifth King to the people of Chhukha. It is located right on the highway and there is a highway toilet also located nearby the chortens. The structures are magnificent and built to cleanse the defilements and for peace and safety of all highway travelers.



Jigmechu Itinerary

Jigmechu ECOTOURISM

Jigmechu Ecotourism is the signature tourism project of Chhukha District. The Ecotourism site was awarded the "Most Performing Community Tourism Destination" at the fifth Himalayan Hospitality and Tourism Awards held in West Bengal on September 27, 2023.

A 2020 assessment report identified Jigmechu as one of the most attractive natural sites with rich biodiversity coverage and huge potential to bring about economic development in the dzongkhag.

The site hosts over 300 bird species, including the endangered White-Bellied Heron, peacock, barking deer, rufous-necked hornbill, wreathed hornbill, and different types of butterfly species among others—due to the presence of peacocks, the place is also known as Majathang.

There are varied experiences—homestay experiences, birdwatching, tongba drinks, fly-fishing, river rafting and pilgrimage sites to visit.

FOR BOOKINGS CONTACT
+975 17334717

Jigmechu Campsite

Jigmechu Ecotourism campsite was established in 2020 and is now operated by five members of Jigmechu community. It is located nearby the river, providing the best river breeze and view for the visitors.



Places around Jigmechu

JIGMECHU AMI NEY

The Ney is located less than 30 minutes walk from Jigmechu campsite. Jigmechu Ney is believed to be the amazing sacred site where Rigdzin Garab Dorji attended the Rainbow body. Rigdzin Garab Dorji was the first saint to receive direct transmission teaching from Vajrasattva.



LAND FORMATION

The southern foothills are abundant with mineral deposits and the process of weathering and denudation leads to unique land formations. It is the first of a kind land formation seen only around Jigmechu, on the way to Lhamoyzingkha.

Jigmechu Treehouse Campsite

One of the unique experiences in Jigmechu is lodging and spending time at the Tree House Campsite. They are unique structures built in harmony with nature to allow visitors to the campsite a unique getaway. It is operated by the eight members of the same Piping community.

FOR BOOKINGS CONTACT
+975 17485002



Nature & Recreation around Jigmechu

BIRDING
RAFTING
FISHING



Tumdrak Ami Ney

Tumdrak Ney is called by diverse names by the locals: the most popular ones are Tumdra Ami Ney, Aum Kangchemba Ney, Lhamo Ekajati Ney, Shiv Mandir, Mahakali Mandir, Mahakala Dham, Jainti Mahakal and Shachaphu Ney.

There are many fascinating features of the Ney that capture one's attention. It has 51 caves all carved out of the cliff-face of the hill. The amazing contents within the many accessible caves are left for you to explore and learn from the guides.

Bjabcho-Chapcha Itinerary

Bjabcho Hotstone Bath & Homestay

At Bjabcho village, just about 6 kms from national highway in Chhukha, you can experience the unique Bjabcho Hotstone Bath, which is known for its high therapeutic properties.

Contact Bjabcho Hotstone Bath Manager
@ +975 17413720 and Bjabcho Lhamo Homestay @ +97517933178



Chhukha Ngoedrup-Tse Dzong

His Holiness the 70th Je Khenpo (spiritual abbot) of Bhutan gave the name “Ngoedrup-Tse” literally meaning the “Pinnacle of blessing” to Chhukha Dzong and is one of the most beautiful Dzongs with contemporary architectural designs in the country. It was inaugurated in March 2012 by Her Majesty the Queen of Bhutan, Ashi Jetsun Pema Wangchuck. It is located in Tsimasham, less than an hour and half drive from Thimphu.



Dokhachu Goenpa

People from every walk of life flock to Dokhachu Goenpa on weekends and auspicious days to receive blessings of Lhamo Ekazati, the wish-fulfilling goddess. The wishes range from seeking prosperity and longevity to getting blessings for offspring. Of late, more people applying for overseas migration and student visas have crowded this temple to make their wishes for a good outcome, earning the reputation as a ‘visa granting temple’!

Paga village & Homestay

At Paga village, you can experience the most authentic Homestay in Chhukha owned by the Mushroom Farming Youth Group consisting women. The place is only about 7 kms from Chhuzom, the confluence of Thimphu and Paro rivers.



ITINERARIES

Itinerary 1

Day 1

Process all relevant documents
Explore Amochhu river site
Visit Phuntsholing Gonpa
Explore Phuntsholing night life

Day 2

Visit to Mila Guthog Lhakhang and explore
Lunch at Phaktshoding
Explore Phaktshoding Lake
Halt at Bjabcho Home stay

Day 3

Visit Chhukha Ngoedrup-Tse Dzong
Travel to Dokhachu Goenpa
Lunch at Paga Homestay
Halt at Bjabcho Homestay

Day 4

Travel to Jigmechu
View Point Lunch, Darla
Fishing, Bird Watching or Rafting
Halt at Jigmechu Ecotourism Campsite

Day 5

Explore Ami Ney
Farm Lunch
Explore Land Formations
Visit Pelden Lhamoi Latsho
Explore Lhamoizingkha town

Day 6

Travel back to Phuntsholing
Halt at Pachu Community Tourism
Halt at Pachu Community Tourism Campsite

Day 7

Exit Phuntsholing

Itinerary 2

Day 1

Process all relevant documents
Travel to Pachu Community Tourism site
Explore Pachu village and enjoy Open River
Swimming & Fishing.
Halt at Pachu Community Tourism Campsite

Day 2

Visit to Mila Guthog Lhakhang
Hike to Phaktshoding Lake and lunch at the Lake
Halt at Bjabcho Home stay

Day 3

Visit Chhukha Ngoedrup-Tse Dzong
Travel to Dokhachu Goenpa
Lunch at Paga Homestay
Halt at Bjabcho Homestay

Day 4

Travel to Jigmechu
Explore Ami Ney
Farm Lunch
Explore Land Formations and visit Pelden Lhamoi
Latsho
Explore Lhamoizingkha town
Halt at Jigmechu Ecotourism Campsite

Day 5

Fishing, Bird Watching and Rafting in Jigmechu

Day 6

Travel back to Phuntsholing
Explore Amochhu river site
Visit Phuntsholing Gonpa
Exit Phuntsholing

Itinerary 3

Day 1

Process all relevant documents
Explore Amochhu river site
Visit Phuntsholing Goenpa
Explore Phuntsholing night life

Day 2

Visit Chhukha Ngoedrup-Tse Dzong
Travel to Dokhachu Goenpa
Lunch at Paga Homestay
Halt at Bjabcho Homestay

Day 3

Travel to Jigmechu
View Point Lunch, Darla
Fishing, Bird Watching and Rafting
Halt at Jigmechu Ecotourism Campsite

Day 4

Explore Ami Nye
Farm Lunch
Explore Land Formations and visit Pelden Lhamoi
Latsho
Explore Lhamoizingkha town

Day 5

Travel back to Phuntsholing
Halt at Pachu Community Tourism
Explore Pachu
Halt at Pachu Community Tourism Campsite

Day 6

Exit Phuntsholing

Itinerary 4

Day 1

Process all relevant documents
Travel to Jigmechu
View Point Lunch, Dharla
Fishing/ bird watching/ rafting

Day 2

Explore Ami Nye
Farm Lunch
Explore Phyllite formation and Pelden Lhamoi Latso
Explore Lhamoizingkha town

Day 3

Travel back to Phuntsholing
Halt at Pachu Community Tourism
Explore Pachu and halt

Day 4

Explore Amochhu river site
Visit Phuntsholing Gonpa
Explore Phuntsholing night life

Day 5

Exit Phuntsholing





Park Hotel

We are a 3 star city center hotel located in the heart of the Phuentsholing town. The famous Zangtopelri Park, immigration office, bus station and the main town are all within 2-5 mins of walking distance. Our restaurant promises delicious multi-cuisines and a park-themed ambiance to elevate your dining experience. The attached bar offers special 'Happy Hour' rates every day from 6 pm to 8 pm. The Park Hotel boasts excellent and furnished Standard to Premium accommodation featuring a blend of traditional and modern Bhutanese design, modern in-room amenities, well-equipped conference hall, air-conditioning, free Wi-Fi and free access to the hotel gym. All guests are guaranteed a customized service to help them unwind from their long road travels or seek a refreshing refuge from the bustling Phuentsholing life.



Number of Rooms

There are 32 rooms in total.

Three different room types:

Park standard: 16 rooms (15 twins & 1 Queen Size)

Park Deluxe: 13 rooms (8 twins & 5 Queen Size)

Park Premium: 3 Premium (3 King Size)



CONTACT

Opposite Zangdo Pelri Park,
Tharpai Lam, Phuentsholing, Bhutan

Front Desk: +975-77847475
Mobile/Whatsapp: +975-17810528
Email: reservations@parkhotelbhutan.com

www.parkhotelbhutan.com

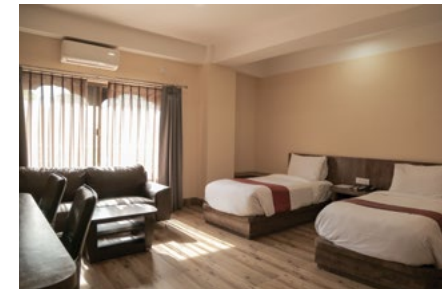


Hotel Phuentsholing

Located at the Norgay Bridgepoint, Hotel Phuentsholing is ideal for those seeking quality time in peace and quiet. It is 200m away from the main town, providing our guests the opportunity to explore festivities and attractions of the local town while also allowing them a serene experience. The hotel is easily accessible by both the local bus and taxis with terminals situated nearby.

Filled with simple yet modernistic design elements, the hotel has 37 rooms, all of which utilize wood as a central theme. Hotel Phuentsholing is a place that values and attempts to blend culture with modernity. Its unique location allows it to do just that. The hotel is next to a local religious hotspot, a mani dungkhor (prayer wheel) where the elderly can be seen practicing Buddhism. This is set against the backdrop of Phuentsholing's busy streets contrasted by a view of the tropical forests.

At Hotel Phuentsholing, we believe in showing our guests all the different facets of life in Phuentsholing. On behalf of the team at Hotel Phuentsholing, we welcome you and hope you have a memorable stay with us.



Additional Hotel Information:

Lift / Elevator: Available

Hotel Category: Standard Tourist Hotel (3 Star)
No of Rooms: 37 Rooms (All equipped with AC/32-inch TV)

Facilities Provided: Free Wi-Fi Services,
Complimentary Tea/Coffee making set in all rooms, Mineral water provided in all rooms, Tourist Information, Night Concierge, Lift Facilities, Fax Services and Conference Hall.

TYPE OF ROOMS AVAILABLE:

Superior Room -12 rooms
Deluxe Room - 10 rooms
Family Room 10 rooms
Suite - 3 rooms
Junior Suite - 3 rooms

CONTACT

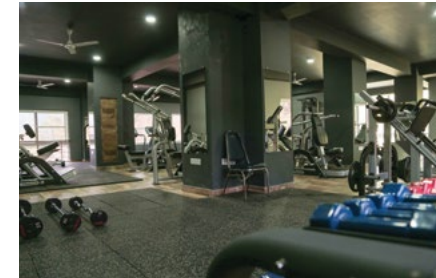
Email: hotelphuentsholing@gmail.com
Telephone Number: +975-05253333/7777

www.hotelphuentsholing.com



Hotel Bhutan Home

Nestled in the heart of the enchanting town of Phuentsholing, Hotel Bhutan Home welcomes you to experience the warmth of Bhutanese hospitality. We offer various types of rooms to cater to different guest preferences and group sizes. These accommodations are equipped with comfortable beds, linens, and essential amenities. With 35 numbers of tastefully appointed rooms, our hotel is an ideal choice for both business and leisure travelers seeking comfort and tranquility.



Additional Hotel Information:

Lift / Elevator: Available

No of Rooms: 35 Rooms (All equipped with AC/ 44-inch TV)

Facilities Provided: Free Wi-Fi Services, Restaurant and Bar, Complimentary Tea/Coffee making set in all rooms, Mineral water provided in all rooms, Tourist Information, Night Concierge, Lift Facilities, Fax Services, Well-equipped Gym, Spacious Parking and Conference Hall.

TYPE OF ROOMS AVAILABLE:

Deluxe Twin Room - 12 rooms

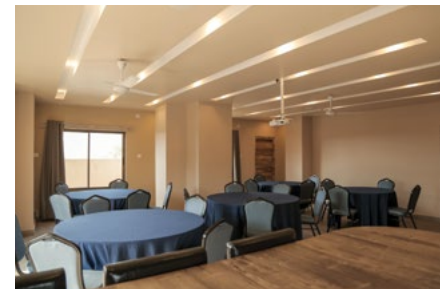
Family Room - 22 rooms

Deluxe Family Room - 1 room

CONTACT

Email: hotelbuthanhome@gmail.com
Telephone Number: +975-05253344/4433

www.hotelbuthanhome.com



Peling Resort

Peling Resort is ideally located at Rinchening, Phuentsholing 5km away from the hustle and bustle of the main town. With a total of 22 well appointed and spacious rooms, we ensure that every guest experiences a blend of comfort and elegance. Indulge your taste buds at our multi cuisine restaurant where a diverse menu curated by our chefs promises a delightful fusion of flavours.

For those in need of a professional venue, our hotel boasts an exceptional conference hall that can accommodate up to 100 individuals and provides a sophisticated setting for meetings, seminars and corporate events. With modern amenities and impeccable service we ensure that your business gatherings and events are seamless and successful. For those seeking vibrant nights, our attached night club offers a space to unwind and let loose. Whether you want to dance the night away or enjoy live music, our night club provides a dynamic and lively atmosphere for our guests to celebrate and create lasting memories. Our hotel is an ideal choice for both business and leisure travelers .



TYPE OF ROOMS AVAILABLE:

We have 22 rooms
17 Deluxe Twin rooms
2 Executive suite rooms
3 family Deluxe rooms

CONTACT

Email: pelingresort@gmail.com
Contact no. +97577100865/17852983

www.pelingresortbhutan.com



Hotel Druk

In the midst of the hustle and bustle Hotel Druk Phuentsholing offers a quaint setting. Combining classical architecture with modern comfort the Druk Hotel offers 32 beautifully appointed rooms including 2 junior suites and 1 presidential suite. Hotel Druk is perfectly positioned as a stay at our hotel guarantees easy access to the main city and the shopping options. A 4 star City Hotel, we offer superior rooms and suites, all of which have been designed to the most exacting standards of contemporary styling. All of our hotel guestrooms have air conditioning making us stand out amongst other hotels in the town of Phuentsholing.

31 well appointed Superior Deluxe rooms & Suites with modern amenities & attached baths. All room rooms are fully air-conditioned with LCD TV, Hair Dryer, Electronic safe, Tea & coffee facilities with water Boiler, mini & Italian marbles in all public areas.

ROOM TYPE :

Superior Single
Superior Double
Suite
Presidential Suite
Extra Bed



**Hotel Druk Phuentsholing
is the best option in the
gate way to Bhutan! Make
every stay for every guest an
experience to cherish. Believe
in Service from the heart.**



CONTACT

Phuentsholing, Chukha : Bhutan
Post Box Number : 148
Contact : +975-5-252426 / 27
Mobile : +975-77190042 / 43 / 44
Fax : +975-5-252929
Email: druk.phuentsholing@drukhoteles.com

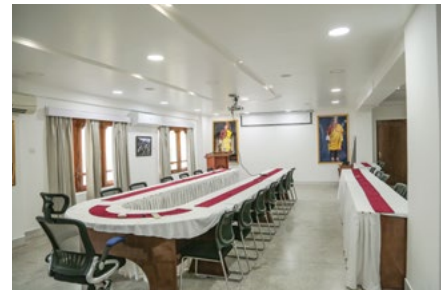
www.drukhoteles.com



Lhaki Hotel

Lhaki Hotel is one-of-a-kind luxury hotel in Phuentsholing, stand just next to football stadium and over looks the beautiful park. We guarantee travelers a unique lifetime experience, with its professional staff and services.

Immaculate & most pleasing location for a family, honeymoon, and relaxation. Situated in a picturesque setting, our hotel offers guests a breathtaking view of the magnificent mountains and bustling streets of Phuntsholing.



TYPE OF ROOMS AVAILABLE:

We have 30 rooms
12 Deluxe rooms
12 Executive rooms
6 Suites

CONTACT

Email: lhakihotel2005@gmail.com
Contact no. 17610235

www.lhakihotel.com

Hotels in Phuntsholing

SI	Hotel Name	Website	Contact #
1	Hotel Phuentsholing	www.hotelphuentsholing.com	975-0525333 / 7777
2	Hotel Bhutan Home	www.hotelbhuthanhome.com	975-05253344 / 4433
3	Hotel Druk	www.drukhotels.com	975-05252426 / 252427 / 252428 EPBX: 77190042 / 77190043 / 77190044
4	Peling Resort	www.pelingresortl.com	975-77100865 / 17852983 / 77375203
5	Lhaki Hotel	www.lhakihotel.com	975-05257111 / 222 / 333 / M:17610235
6	Hotel Lotus Villa	www.hotellotusvilla.com	77382518 / 77111415 / 251775
7	The Orchid Hotel	www.theorchid.bt	975-05254293 / 254291 / 17111572 / 17610923
8	Hotel sinchula	www.sinchulahotels.com	17110452 / 77323125
9	Hotel Everest Inn		17572168 / 17683818
10	Hotel Drukies	www.hoteldrukies.com	17692369 / 251914
11	Asain Kitchen	www.asiankitchenhotel.com	17614446 / 0091-897275656
12	Centennial Hotel 2008		17869815 / 17692439 / 17604849
13	Alem Hotel & Resort	www.alembhutan.com	77376930 / 17525363
14	Hotel Heaven Inn		17602954

SI	Hotel Name	Website	Contact #
15	Park Hotel Phuentsholing	www.parkhotelbhutan.com	77847475
16	Hotel Amo Chhu View		17602917 / 17637827 / 17720534 / 251794
17	Tashi Namgay Grand		975-05250020 / 77332535
18	Hotel Pelri		77103762 / 17284897
19	Bhutan GaMeGa		975-05253064 / 253065
20	Bhutan Hotel		17609921
21	Meto Pema Hotel	www.metopema.com	17140211
22	Central Hotel	www.centralhotelbhutan.com	17791840
23	Hotel Gadhen Namgayling		975-05251637 / 38
24	Evergreen 9 Hotel		975-05253592 / 17671556
25	Arya Jorden Hotel	www.aryahotel.com	1730222 / 253611 / 17767274
26	Hotel Tulsita		77163973
27	Hotel Khamzang		17972008 / 17635503
28	Hotel Namgay		17112912 / 253321
29	Punjab Grand Hotel		77390210 / 253717
30	Hotel Blue Dragaon		17110551
31	KD Phuensum		17570686
32	Hotel Damchen		17110711
33	Thuenpa Puenzhi		77110505
34	Hotel Palm	www.thehotelpalm.com	17111064 / 251788 / 87/90

Homestays owners of Chukha



Homestays in Chukha

SI No	Name of Homestay	Owner Name of Homestay	Village	Gewog
1	Lhamo	Lhamo Homestay	Bjabcho	Bjabcho
3	Kinzang Deki	Dekis Homestay	Bjabcho	Bjabcho
2	Karma Dema	Kaydee Homestay	Bongo	Bongo
4	Sonam Choki	Sonam Choki Homestay	Bachu	Getana
5	Tshewang Dem	Gangkhap Homestay	Gangkha	Chapcha



Printing of this book is supported by
HELVETAS BHUTAN



The design and photography of the book is supported by Hotel and Restaurant Association of Phuntsholing and from personal collection of Mr. Sangay Thinley, Economic Development Officer (EDO) of Chhukha Dzongkhag (2019-2023). He can be reached at sthinley1983@gmail.com



Contact Points

- Jigmechu Ecotourism site: +975 17334717
- Tree House Campsite, Jigmechu : +975 17485002
- Pachu Community Tourism Site: +975 17333201

Homestays:

1. Dekis Homestay: Bjabcho Village: +975 77 67 89 37
2. Lhamo Homestay: Bjabcho Village: +975 17 93 31 78
3. Sonam Choki Homestay: Getana Village: +975 17 98 65 12
4. Kaydee Homestay: Bongo Village: +975 17 58 94 30
5. Chechay Homestay: Paga Village: +975 17 86 42 30

Thank You